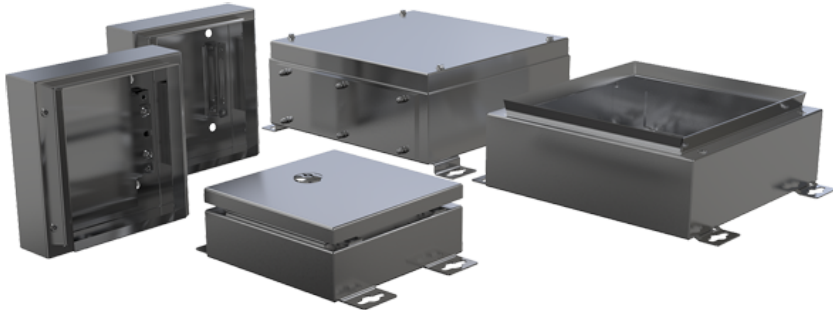


Stainless Steel RMS



- + **Modular System**
- + **Choice of standard versions or individual configurations of enclosure**
- + **Over 40,000 possible combinations**
- + **High surface quality, grinded, grain 320**
- + **Ingress protection up to IP69**

Included in delivery

Enclosure base with 4 mounting holes, two retaining brackets and welding studs for mounting built-in components, 4 possible grounding points on the retaining brackets; cover with internal M6 grounding studs and optionally screwed with captive cover screws or hinged with lock; optionally with screwed or welded external mounting brackets, flange version or mounted mounting plate

Technical data

Material:	Stainless steel 1,25 mm, 1.4301/304
Colour:	
Ingress protection:	IP66 / IP69 acc. to EN 60529 screwed lid, IP66 acc. to EN 60529, hinged lid
Surface:	grinded, grain 320, other surface on request
Impact resistance:	IK09 acc. to DIN EN 60068-2-75, screwed lid, IK08 acc. to DIN EN 60068-2-75, hinged lid
Temperature range:	VMQ (silicone) seal (optional): -55°C to +135°C
Other versions on request:	EMC, coating, further temperature ranges

Product range

Product type	Order number	Dimensions H x W x D (mm)
hinged lid	R1142E21XX0	600 x 300 x 160

Accessories

Pole Clamp Mounting

Order number

37.10 99 30

External mounting brackets cranked

Order number

10.03 37 02

Montageplatte

Order number

10.01 37 07

External mounting brackets straight

Order number

10.03 37 01

Certificates

No approvals